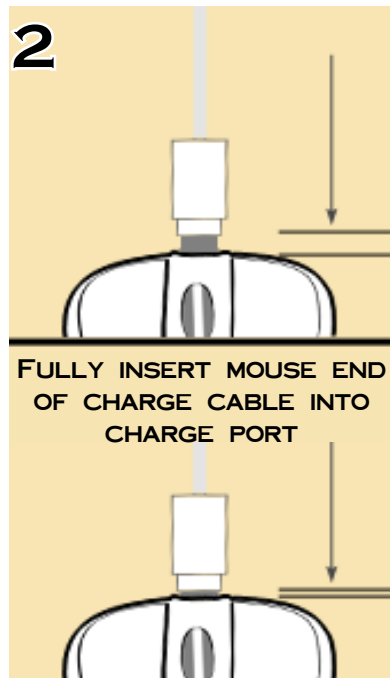
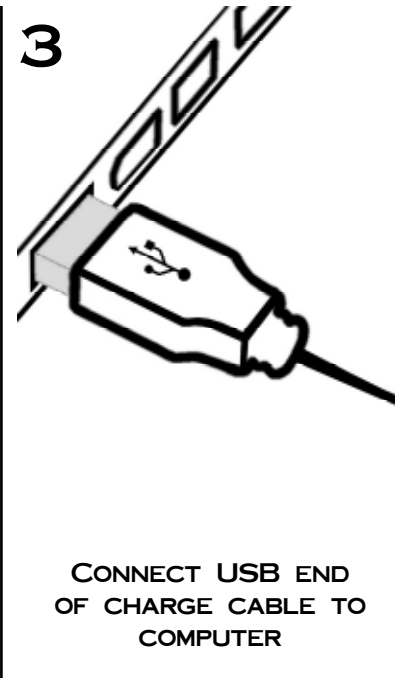


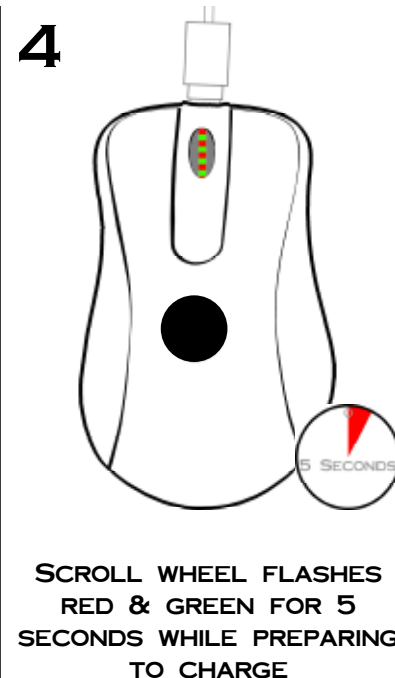
SWITCH MOUSE OFF
INSTALL BATTERIES



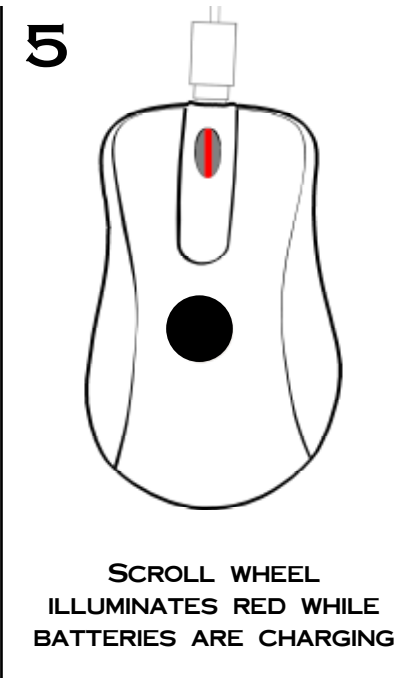
FULLY INSERT MOUSE END
OF CHARGE CABLE INTO
CHARGE PORT



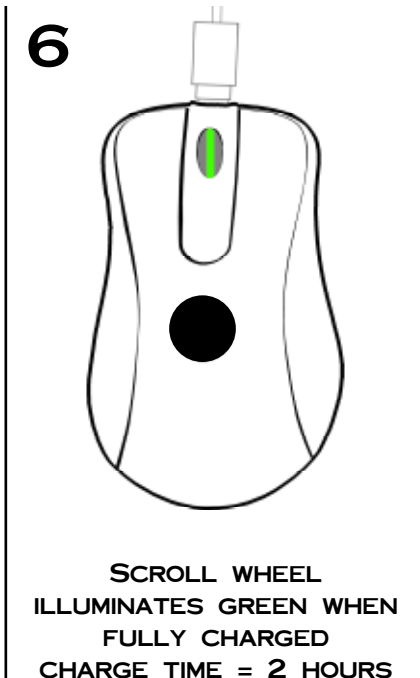
CONNECT USB END
OF CHARGE CABLE TO
COMPUTER



SCROLL WHEEL FLASHES
RED & GREEN FOR 5
SECONDS WHILE PREPARING
TO CHARGE



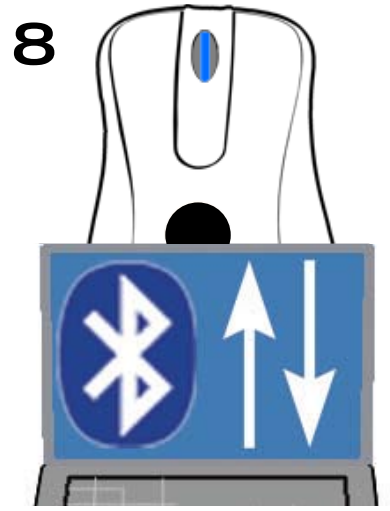
SCROLL WHEEL
ILLUMINATES RED WHILE
BATTERIES ARE CHARGING



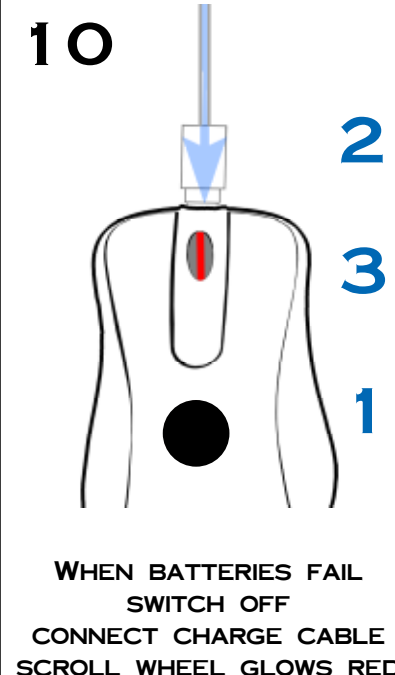
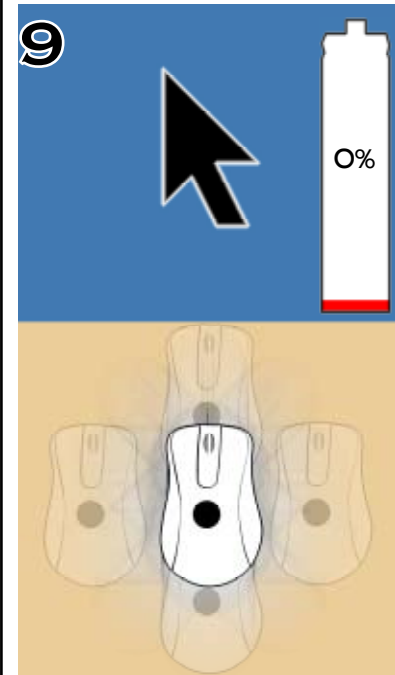
SCROLL WHEEL
ILLUMINATES GREEN WHEN
FULLY CHARGED
CHARGE TIME = 2 HOURS



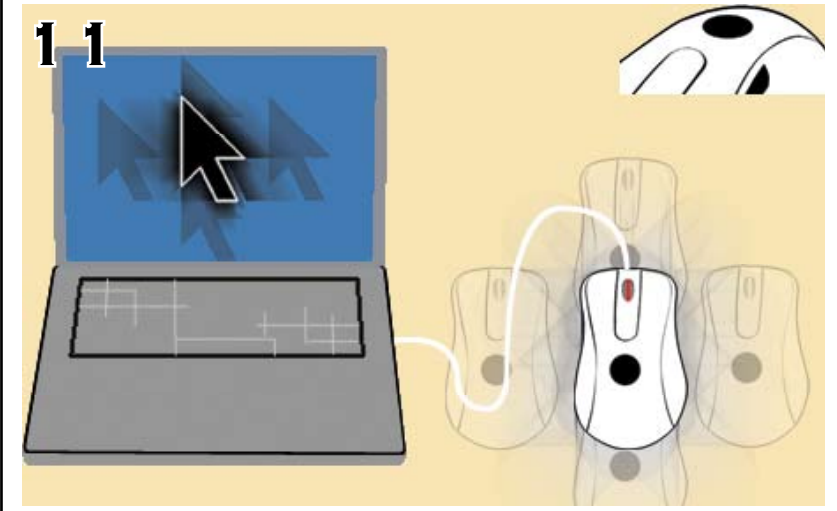
SWITCH MOUSE ON
PRESS PAIRING BUTTON



WHILE SCROLL WHEEL
GLOWS BLUE
PAIR TO COMPUTER



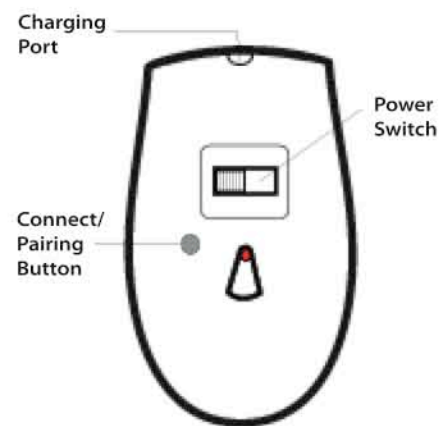
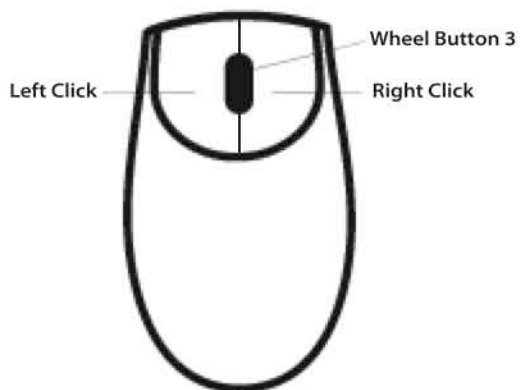
WHEN BATTERIES FAIL
SWITCH OFF
CONNECT CHARGE CABLE
SCROLL WHEEL GLOWS RED



TO USE WHILE CHARGING
SWITCH MOUSE ON ONCE SCROLL WHEEL IS SOLID RED
DISCONNECT CABLE ONCE CHARGE IS COMPLETE (GREEN)

RADTECH™ Rechargeable Bluetooth Wireless Mouse PC Quick Setup Guide

For model-specific details of each mouse visit www.radtech.us/BTgear



Before Using

1. Install two batteries into the battery slots of your mouse. Alkaline or NiMH rechargeable recommended.
2. Slide the power switch to the on position and press the pairing button on the underside of the mouse until the scroll wheel glows blue to indicate mouse is discoverable.
3. Pair your Bluetooth mouse with your computer.

Pairing Process PC

NOTE: Instructions for the pairing process are based on the Microsoft Windows XP Service Pack 2. Please follow the instructions that come with your Bluetooth software if you don't use Windows XP Service Pack 2.

1. Open the Windows Control Panel, then select "Bluetooth Devices"



2. Click "Add".



3. Check "My device is setup and ready to be found", then click "Next".



Installing Batteries

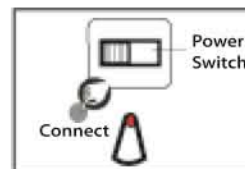
For model-specific details of battery installation visit www.radtech.us/BTgear

Use Alkaline or NiMH rechargeable batteries

Only connect USB charge cable if NiMH rechargeable cells installed.

Power-saving sleep mode extends battery life - when the mouse is moved after being in sleep mode, the connection is restored in seconds.

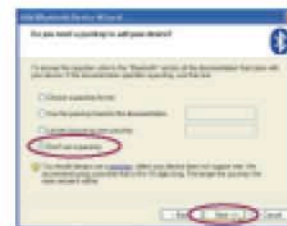
4. Press and hold the connect or pairing button until the optical sensor or scroll wheel flashes blue.



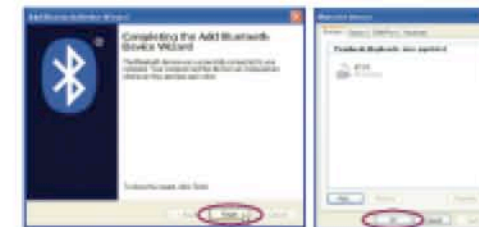
5. Under "Peripherals (keyboards, mice, joysticks)", select "BTXXX", then click "Next".
XXX = Model number of your mouse



6. Select "Don't use a passkey", then click "Next".



7. Windows will start to connect your mouse automatically. Please press "Finish" button after the connection process is complete.



Once the connection between your mouse and computer is established, the connection will be permanently maintained and will re-establish automatically each time Window runs.

NOTE: Use care NOT to press pairing button once the mouse has been paired. If pressed, connection will be lost and pairing process will need to be repeated.

Please follow regional rules for Bluetooth use.

2006 RadTech, LLC. RadTech and the RadTech logo are trademarks of RadTech, LLC. All other trademarks belong to their respective owners. The information in this document is subject to change without notice.

www.radtech.us

Use power On/Off switch to conserve energy when not in use

Scroll Wheel LED Status Indicator

- Red- Charging
- Green-Charge Complete
- Flashing Green-Unable to charge
- Flashing Red-No battery detected
- Blue-Searching for host
- Flashing Red and Green- NO USB power detected-Power Mouse off & reconnect USB cable

NOTE: A USB-BT adapter is required if your computer is not configured with built-in Bluetooth.