

KR1 Mobile Router Firmware Update



As new technology comes out, the KR1 requires updates to work with new hardware. This walkthrough will help you update your router.

Before starting: Download the firmware update from Kyocera to your computer.

STEP 1: Power the Router

The KR1 can be powered by either your 115 V wall power outlet or your 12 V car outlet. Using the appropriate cables provided, connect your router to a power supply.

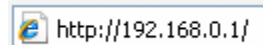
STEP 2: Connect your PC to the Router

While it is possible to connect to your router using WiFi, **do not connect using WiFi** for firmware updates. Doing so may result in your router having incomplete firmware, rendering it useless.

The router should be connected to a computer using a standard Ethernet cable with RJ45 connectors. The blue cable included with the KR1 can be used. There are four RJ45 ports on the KR1, numbered 1 through 4. Plug one side of the cable into port 1 on the router, and the other side into your computer. If your computer does not have an RJ45 port you will need to either install one or use a different computer for the update.

STEP 3: Access the Router from your PC

Open your web browser. In the address bar of your browser, type `http://192.168.0.1/` so that it looks like this:



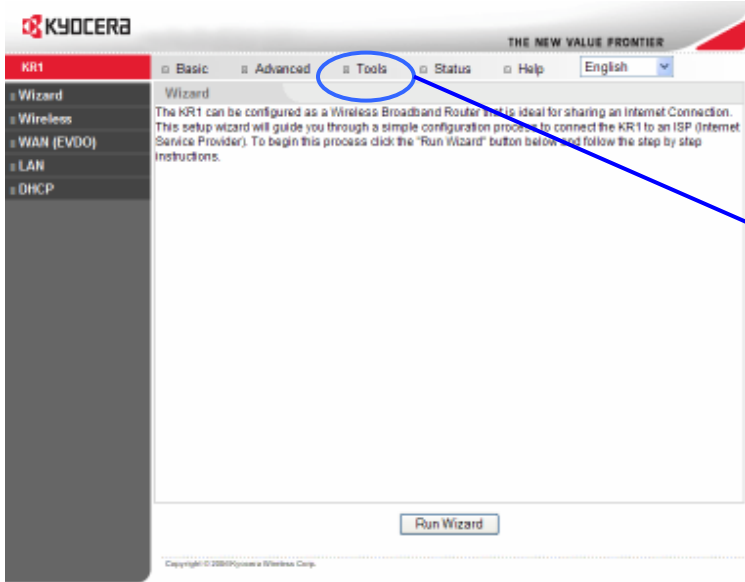
The following window should appear if you are using Windows XP:



The correct user name is “admin” and the password should be left blank, unless the login information has been changed since purchase.

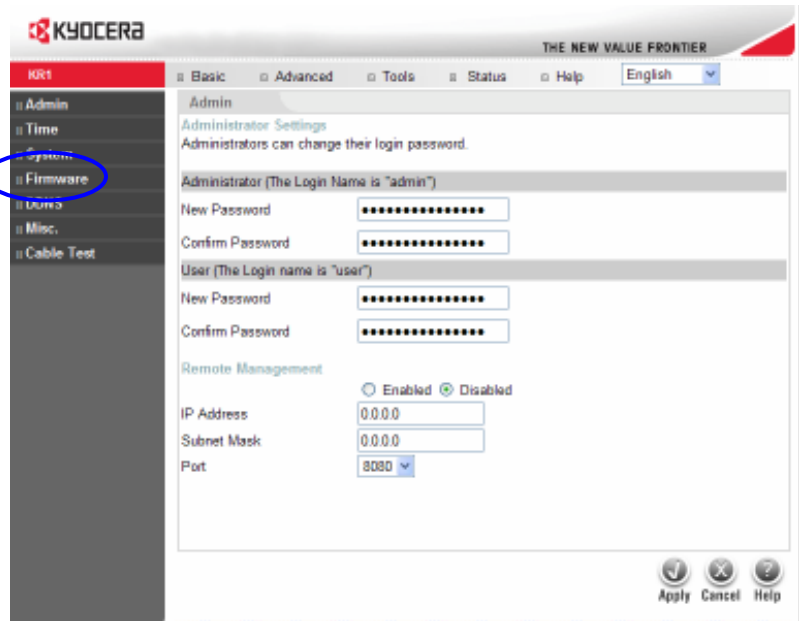
Click “Ok”

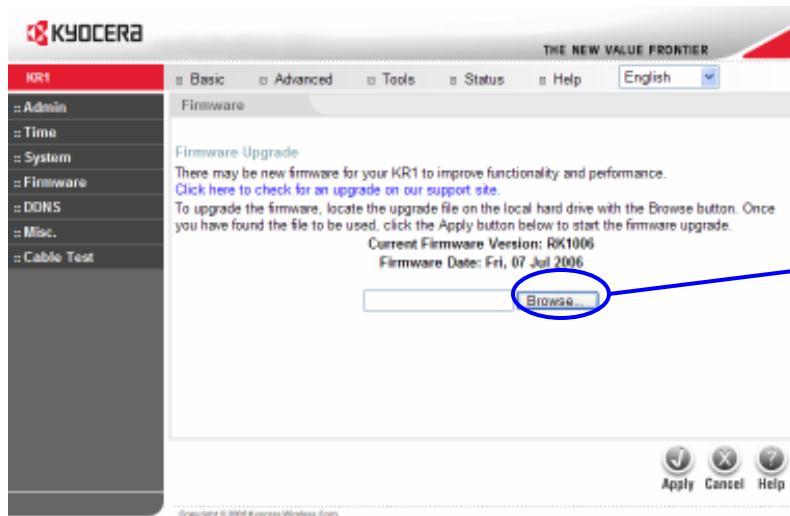
STEP 4: Update the Router



Click "Tools"

Click "Firmware"





Click "Browse..."

Select the firmware update you downloaded previously. Here it is shown on the desktop.

After selecting the update the filename should appear at the bottom.

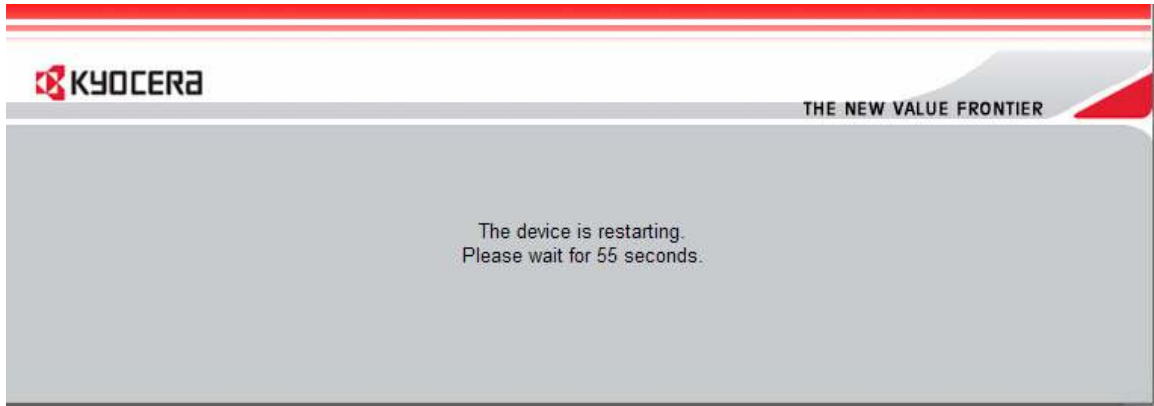
Click "Open"



At this point you will be taken back to the previous window. The file you selected should now be listed next to the "Browse..." button.



Click “apply” to begin the update. Wait a few moments and the below message should appear:



The timer will count down, and then the page will refresh to show your update completed.

